

2023 JAN - MARCH CRASH REPORT

For the third year, Trailnet is releasing a first quarter Crash Report, which compares the number of bicycle, pedestrian, and vehicular crashes from January 2023 to March 2023 to the same time period in 2022 within the City of St. Louis and St. Louis County.

Please note that these crash statistics are subject to change depending on numerous factors. Personal injury crashes may change to fatal crashes if the injuries suffered from the crash lead to the death of a person later in the year. It is also worth noting that there can be a significant delay in when crashes are reported and logged by municipalities. Specifically, the total number of vehicular and pedestrian crashes may increase due to delays in reporting. The numbers you see in the report are the number of people affected by a crash, not the number of crashes that were reported. Trailnet pulls data from the Missouri Statewide Traffic Accident Records System (STARS), which is managed by the Missouri State Highway Patrol.

CITY OF ST. LOUIS

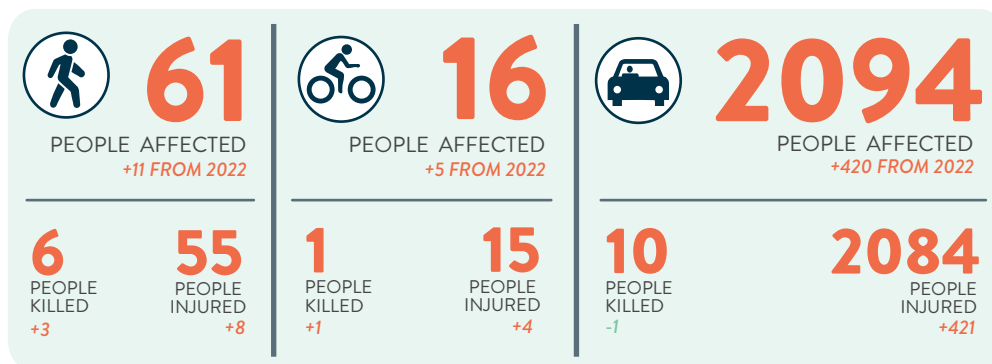


THE ST. LOUIS REGION'S TOP CRASH CORRIDOR

GRAND BLVD

Grand Blvd has been the top crash corridor in the City of St. Louis every year since Trailnet started tracking data. It is on pace to capture that title again in 2023.

ST. LOUIS COUNTY



TAKEAWAYS

When comparing crashes in January-March 2023 to January-March 2022, we've seen increases in many of the major categories. The above numbers are sobering.

Crucially, the most dangerous corridors keep getting more dangerous. As we've noted many times in past reports, the majority of crashes that result in serious injury and death for people walking and biking take place on the same high crash corridors every year. Nowhere is this trend more apparent than on Grand Blvd., which has been the top crash corridor in the region as long as Trailnet has collected data. In the County, the high crash corridors from the last three annual reports—St. Charles Rock Rd., Florissant, Lindbergh, etc.—are once again leading the way in the first quarter of 2023. It is imperative that the City and County develop comprehensive plans for calming traffic on these corridors and addressing ever-worsening trends.